

# Anti-CD206-Antibody

Cat No: Kab01442

---

## Product Information:

Size:	100µg
Form:	liquid
Purification:	Immunogen affinity purified
Purity:	≥95% as determined by SDS-PAGE
Host:	Rabbit
Clonality:	polyclonal
Clone ID:	None
IsoType:	IgG
Storage:	PBS with 0.02% sodium azide and 50% glycerol pH 7.3, -20°C for 12 months (Avoid repeated freeze / thaw cycles.)

## Background:

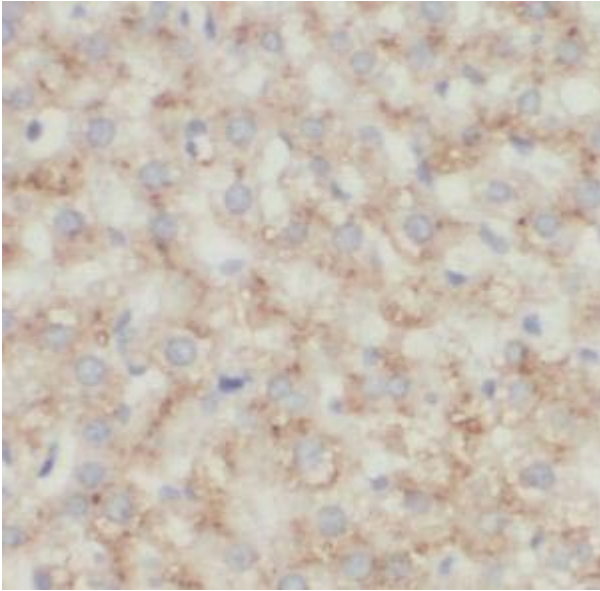
CD206, also named as MMR, CLEC13D and MRC1, is a type I membrane receptor that mediates the endocytosis of glycoproteins by macrophages. CD206 has been shown to bind high-mannose structures on the surface of potentially pathogenic viruses, bacteria, and fungi so that they can be neutralized by phagocytic engulfment. CD206 is a 170 kDa transmembrane protein which contains 5 domains: an amino-terminal cysteine-rich region, a fibronectin type II repeat, a series of eight tandem lectin-like carbohydrate recognition domains (responsible for the recognition of mannose and fucose), a transmembrane domain, and an intracellular carboxy-terminal tail. It is expressed on most tissue macrophages, in vitro derived dendritic cells, lymphatic and sinusoidal endothelia. This antibody recognizes the intracellular carboxy-terminal part of CD206 and MRC1L1.

## Immunogen information

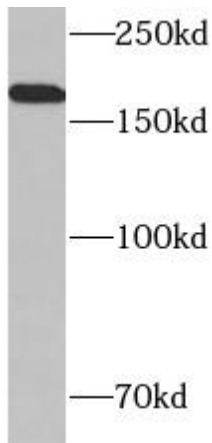
Immunogen:	mannose receptor, C type 1
Synonyms:	CD206, CLEC13D, Macrophage mannose receptor 1, Mannose receptor, mannose receptor, C type 1, MMR, MRC1
Observed MW:	166 kDa
Uniprot ID:	P22897

## Application

Reactivity:	Human, Mouse, Rat
Tested Application:	ELISA, WB, IHC, FC
Recommended dilution:	WB: 1:200-1:2000; IHC: 1:50-1:200

**Image:**

Immunohistochemistry of paraffin-embedded human liver using Kab01442 (MRC1 antibody) at dilution of 1:100



mouse kidney tissue were subjected to SDS PAGE followed by Western blot with Kab01442 (MRC1 Antibody) at dilution of 1:500 .

**Note: This product is for research use only, not for diagnostic or therapeutic use.**